


**PARTS LIST/ LISTE DES PIÈCES/ LISTA DE PIEZAS**  
**ITEM / NO D'ARTICLE / ARTICULO NO.: 1497-9**  
**DESCRIPTION / DESCRIPCIÓN : LINGERIE CHEST / COMMODE / CÓMODA**

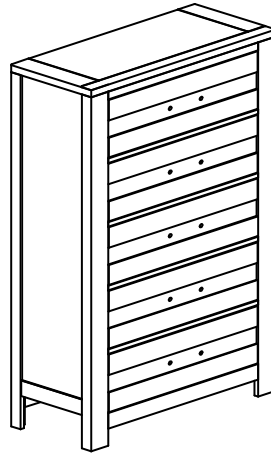
**WARNING**



Children have died from furniture tipover. To reduce the risk of furniture tipover .

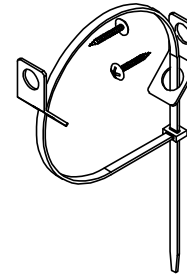
- ALWAYS install tipover restraint provided
- NEVER put a TV on this product .
- NEVER allow children to stand, climb or hang on drawers, doors, or shelves .
- NEVER open more than one drawer at a time.
- Place heaviest items in the lowest drawers.

*This is a permanent label.  
Do not remove!*



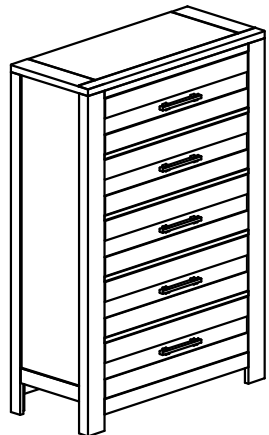
**A**

1 x Drawer Chest  
1 x Commode À Tiroirs  
1 x Cómoda



**B**

1 x Furniture Tipping Restraint \*  
1 x Systeme antibasculement  
1 x Control para evitar vulcos



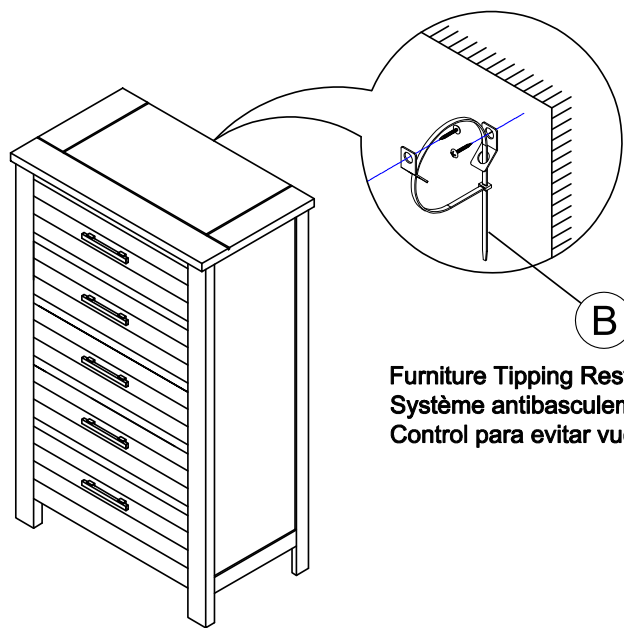
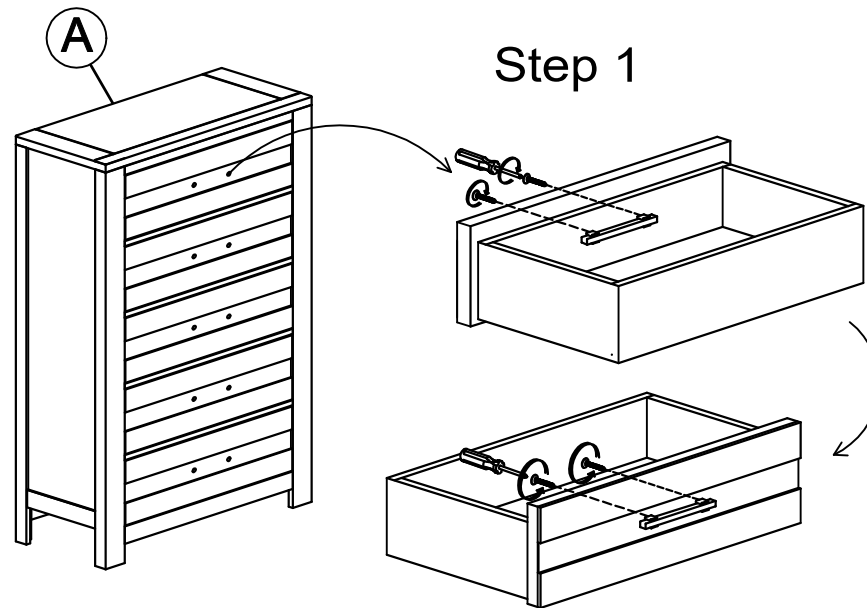

**ASSEMBLY INSTRUCTION / NOTICE DE MONTAGE/ INSTRUCCIONES DE MONTAJE**  
**ITEM / NO D'ARTICLE / ARTICULO NO.: 1497-9**  
**DESCRIPTION / DESCRIPCIÓN : LINGERIE CHEST / COMMODE / CÓMODA**

**WARNING**

Children have died from furniture tipover. To reduce the risk of furniture tipover .

- ALWAYS install tipover restraint provided
- NEVER put a TV on this product .
- NEVER allow children to stand, climb or hang on drawers, doors, or shelves .
- NEVER open more than one drawer at a time.
- Place heaviest items in the lowest drawers.

*This is a permanent label.  
Do not remove!*



**Step 2**

**Furniture Tipping Restraint**  
**Système antibasculement**  
**Control para evitar vuelcos**